



**Swallowfield Parish**

# **Newsletter**

**Autumn 2024**

## **Bowed Not Broken (Croudace Development Appeal)**

It is with a mixture of anger, frustration and sadness, emotions shared with the majority of Swallowfield residents, that I am writing to you about the debacle of the Croudace Homes application and the approval, granted at appeal, to build 81 homes on the land west of Trowes Lane and north of Charlton Lane.

Let me begin by expressing my personal thanks to those of you who supported our efforts to block this development with hundreds of letters to the planning authority, by attending the Planning Committee Meeting in huge numbers back in January (when the application was refused), and through your ample presence at Swallowfield Parish Hall over several days during the appeal hearing in June. Notwithstanding the outcome, I believe this campaign has brought us closer together as a community and that we will come

together to defend our community again in the future.

In addition, I wish to recognise and extend special thanks to a core group of residents, known belatedly as the Swallowfield Community Action Group, who have given so much of their time, energy and expertise to fighting this development. I was privileged to work with this group in the early stages of the campaign, when I was Chair of Planning at SPC, and intensively since I left the council back in April. I won't embarrass them by naming them, but I'm sure you know who they are. We all owe them a huge vote of thanks.

The speed with which the appeal decision was taken, the judgement based on failings at WBC over which we have no control, the deflection of our issues (somebody else's problem) and the decision to prioritise

planning policy over commonsense beggars the imagination. If you missed the final day, the commonsense issues were included in our Closing Statement which you can read on the Planning portal. Type the following in your browser: [www.tinyurl.com/SCAG-Closing](http://www.tinyurl.com/SCAG-Closing)

Even our new Chancellor, in an early statement on planning policy, made it clear that appropriate infrastructure should at least accompany, if not precede, the building of houses on 'grey' land. Sadly, that does not seem to apply to us.

This will not be the end of the story. It can only be a matter of time until planning applications are received for multiple plots of land between Swallowfield and Riseley.

**Ian Fullerton**  
on behalf of the Swallowfield  
Community Action Group

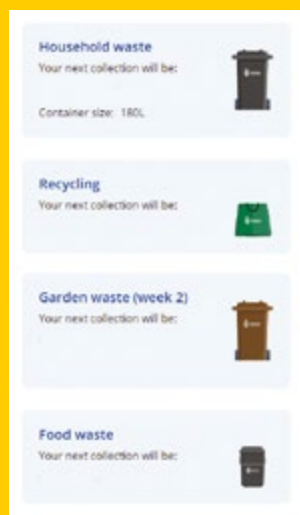
Editors Note: A Summary of the Inspector's Decision and Its Implications on page 4.

# Parish News

## Waste Collection

If you are unsure whether to put out recycling or waste type the following in your browser: <https://tinyurl.com/d4a658sx> then enter your postcode, select your address and it will display your next collection date for each type of waste.

**Remember** food waste can be put out each week.



### Phil Watts New Parish Caretaker

The council would like to introduce Phil Watts who has taken over from Derek Norris as Caretaker.

Although he is based at Swallowfield Parish Hall, you will see him out and about in Riseley and Farley Hill. One of his responsibilities is to inspect the children's play equipment we have in all three villages. So why not say hello?



### Introducing Victoria Adams to Swallowfield Parish Council

My name is Victoria Adams. Wife to Justin, a mother to 3 young adults, and a multitude of animals, whilst also a VP of Human Resources. I own a small boutique skincare brand which donates some of its profits to charity

I have lived in the parish for over 15 years and have recently settled, for life one hopes, in Farley Hill. As soon as we moved to the area the strong sense of community was palpable and the popularity of social media has been a huge compliment to how residents engage and communicate.

We have pride in where we live and a keen sense of doing what is right for the community. Having a strong commercial background assists in practical and pragmatic thinking and, given my role, can often see both sides of the coin when assessing a given issue, whilst my passion is tempered with being both calm and methodical and bringing light and humour to some situations can often be very useful. It is huge privilege to serve the community and give hopefully "give something back" after decades working in the corporate world.

# Reflections from the Chair

## Welcome

I would like to begin by extending a warm welcome to Vikki Adams who has been co-opted onto the council to fill the vacancy resulting from the resignation of Ian Fullerton. I would like to thank Ian for his work latterly as Chair of our Planning Committee and also as lead of our transport working group championing Speedwatch and lower speed limits. Simon Taylor has taken on the role of Chair of our Planning Committee.

I would also like to welcome our new caretaker, Phil Watts, who has joined the team following the retirement of Derek Norris. The Parish Council extends its best wishes to Derek for a happy retirement.

It goes without saying that the main news locally has been the appeal inquiry into the development of 81 homes off Trowes Lane and the decision of the Inspector to allow the appeal. The Parish Council and most residents were strongly opposed to the development so this came as a great disappointment. My thanks go to the Community Action Group who supported by the Parish Council brought forward evidence as to the unsustainability of Swallowfield as a location for more housing. A major consideration was the lack of available school places locally. This is really a separate issue, and the Parish Council will work with relevant parties in the rest of the new ward to lobby the Borough Council to ensure that its education plans take proper account of the ward's needs including Farley Hill, Riseley and Swallowfield. My thanks also go to everyone across the parish who demonstrated their opposition to the development by attending one or more sessions of the inquiry. I discuss the Inspector's decision and implications further on page 4.

The Annual Parish Meeting was well attended because of the discussion regarding the planning appeal. In addition, two proposals were made by residents – one a request for a hearing loop in the hall and the other for an additional autumn litter pick. The Parish Council is following up on both these suggestions.

It is disappointing for me to have to report that there has been vandalism in Swallowfield including the breakage of one of the Jubilee picnic tables and damage to the astroturf in the play area. The astroturf alone has cost over £500 to put right. A replacement part for the picnic table has been ordered from the supplier but the repair is time consuming because it will require disassembly and reassembly. These mindless acts of vandalism are difficult to comprehend. In addition, the village shop has had to contend with several instances of shoplifting. Regrettably, even with CCTV, it is unlikely the culprits would be brought to justice.

On a more positive note, the allotment association opened up the allotment field this year in June as part of the National Garden Scheme and a number of gardens opened up in and around Swallowfield to raise funds for charity.

Other events included the church fête which was held on the Swallowfield recreation ground in early June. Once again, the Farley Hall Horse Trials took place in Swallowfield Park in late June. By the time you read this the Swallowfield Show will have taken place on the August Bank Holiday so I am hoping the weather was kind and you were able to go along.

I trust you have all had a pleasant, albeit late, summer as we enter the season of mellow fruitfulness. I am now hoping there will be another crop of apples from the community orchard to be pressed into juice this year. Cheers!

**Cllr John Anderson**  
Chair

[john.anderson@swallowfieldpc.gov.uk](mailto:john.anderson@swallowfieldpc.gov.uk)



## Contents

- 2 Parish News
- 3 Reflections from the Chair
- 4 A Summary of the Inspector's Decision and Its Implications
- 5-13 Local clubs and groups
- 14 Your Local Borough Councillor Update
- 15-18 Local Services and Support
- 19 Facilities for hire



# A Summary of the Inspector's Decision and Its Implications

The Inspector noted the shortfall of housing land in the Borough's Local Plan and the under-delivery of housing achieved to date and deemed this to be a relevant consideration. As a result, the so-called "tipping balance" was engaged. This means that conflicts with the Local Plan policies which the Inspector acknowledged can be set aside. The benefits of the development then have to be weighed up against the harms with the presumption being in favour of development as set out in the National Planning Policy Framework. The following extracts from the Inspector's Report set out his view of the benefits and harms.

*"Set against these conflicts are a number of benefits that would flow from the appeal scheme. The most important would be the provision of 81 new dwellings in a range of sizes. That would be of particular importance given the demand for housing in the area and the lack of available land on which to build new dwellings. Forty per cent of the dwellings would also be affordable housing tenures. I was presented with evidence at the inquiry which showed there to be a real problem of affordability in the area, with a persistent unmet demand from those unable to afford housing on the open market. The scheme would help to address that need. I give both these benefits substantial weight."*

*"I have concluded that there would be substantial benefits accruing from the scheme, in particular the provision of open market and affordable housing. Balanced against those benefits is the harm that would be caused to the strategy that directs where new development should be located, the landscape, and accessibility to facilities and services. However, in each case I have found that only moderate or limited weight should be given to that harm. It follows that the adverse impacts of the proposed development would not significantly and demonstrably outweigh the substantial benefits of the scheme. Accordingly, the Framework supports planning permission being granted."*

There is nothing more that the parish could have done in light of this conclusion. It is the Borough Council that manages the land supply and rate of housing delivery. Clearly the principle of providing infrastructure ahead of development carries little weight in this case. The Inspector did however impose certain pre-conditions for Thames Water to ensure adequate capacity in the sewerage system. It is the Parish Council's view that these conditions can be easily discharged and will not significantly delay the development if at all. We will never know what if any influence the change of Government may have had on the decision. Swallowfield will be vulnerable to further similar planning applications until such time as the Borough Council's Local Plan Update which is long overdue passes examination and is eventually adopted and housing land supply and delivery rates meet the required targets. The situation is further exacerbated by the new Government's reinstatement of housing delivery targets because it means yet more housing land must be identified in that plan. Wokingham Borough's annual target will increase from 748 to 1,308 according to the BBC. This could render the Local Plan Update out of date before it is even adopted.

Cllr John Anderson  
Chair

john.anderson@swallowfieldpc.gov.uk

Editor's Note: The personal view from one of our ward councillors can be read on page 14.

## Local clubs and groups

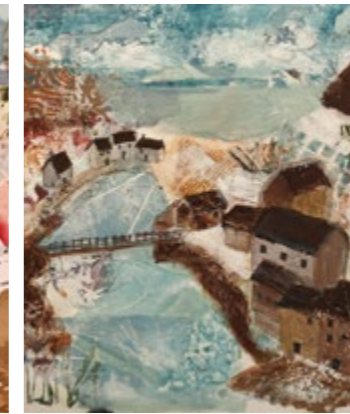
To see the progression of a collage, take a look at the following pictures:



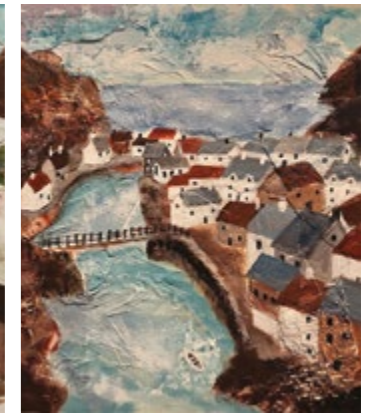
1. My reference photo of Staithes in North Yorkshire.



2. The initial collage layout, the colours indicating the rough positions for sky, land and river.



3. Shows the adding of an initial paint layer and the inclusion of more details.



4. The completed work.



### SWALLOWFIELD ART GROUP

This term we have been working with collage as an art medium. Collage describes both the technique and the resulting work of art, in which pieces of paper, card, tissue, photographs, fabrics and other interesting textures are arranged and stuck down onto a supporting surface.

The term collage is from the French 'papiers collés' ('pasted paper', also called decoupage), which dates from the early 20th century.

Once the initial layout has been created to reflect the general structure of the reference picture,

the layout is sealed with a thin layer of glue. Once the background is dry, further layers may be applied. Finally, paint is used to add detail such as buildings and other hard landscaping or physical features. The underlying collage layer adds texture and interest to the resulting picture.

If you are interested in joining us, please call **Jenny Boddington** on **0118 988 5804** for further details. We meet at Swallowfield Parish Hall on Mondays from 2pm to 4pm during term times.

**Patricia Taylor**



Also shown are other works by members of the group, using the same technique.





## SWALLOWFIELD PARISH ALLOTMENT ASSOCIATION

Summer finally arrived down at the Calico Field, and our plants have thrived on the long-awaited warmth. It's been a joy to be able to harvest our produce, including peas, broad beans, broccoli, cauliflower, onions, garlic, spring onions and fruit. The allotments are currently looking magnificent, and the fruit and vegetables are complemented by an impressive display of sweet peas, dahlias and sunflowers.

We had a very successful day when we opened the allotments for the National Gardens Scheme in June, welcoming over 100 visitors on a gloriously sunny day. We sold many plants and enjoyed chatting to friendly visitors about plants, gardening and slug control! We are hoping to open for another successful and enjoyable day next year.

The next date in our calendar is the Harvest Festival on 21st September where we will again be showcasing

the field, selling plants and raising funds to keep the site in order. As a result of events like this, we have recently been able to give one of our sheds a new lease of life by having the roof replaced, but we have also been able to buy some garden power tools for the allotments to save members having to use their own equipment to keep the field tidy.

September marks the onset of Autumn but the growing year is not over yet. Later crops are coming into harvest now and there's plenty of work still to do:

- Harvest any remaining beans, tomatoes, peppers, sweetcorn and globe artichokes
- Harvest the first of the autumn crops such as leeks, pumpkins and main crop and sweet potatoes
- Pick any late plums, mid-season apples and pears, and autumn-fruiting raspberries

- Plant spring cabbages to overwinter for next year
- Clear away dead foliage and other remains as soon as crops have finished - Add to the compost heap

All our plots are taken, but if anybody is interested, we are always happy to put names on a waiting list.

If you would like to know more, take a look at our website: [www.swallowfieldallotment.org](http://www.swallowfieldallotment.org)

Or contact the SPAA Secretary, Linda Bradley: [secretary@swallowfieldpaa.org](mailto:secretary@swallowfieldpaa.org)

Happy gardening!

**Jane Scuffell, Plotholder**



**Contact:** Linda Bradley, SPAA Secretary  
**e:** [secretary@swallowfieldpaa.org](mailto:secretary@swallowfieldpaa.org) **w:** [www.swallowfieldallotment.org](http://www.swallowfieldallotment.org)



## SWALLOWFIELD HORTICULTURAL SOCIETY & SWALLOWFIELD SHOW

At the time of writing, we are in the final preparation for our major event, the two day Swallowfield Show, an event by the community, with the community and for the community, but at the same time utterly vulnerable to the weather gods. When you read this, it will be clear whether they were with us or not.

The Society functions through the year with other events related to the love of growing plants.

We join with SAHGA every second Thursday of the month for talks and events. These are very friendly events held at Shinfield Infants School on Shinfield Green near the Council offices. There is parking in the school grounds or on the big parking on the Green.

We pay £1 entry to the meeting and hopefully buy a raffle ticket. We then sit back and enjoy a talk in September "A gardener's look at Ireland" by Geoff Peach, or in October a talk on "Bees for the garden" by Adrian Doyle.

If you would like company for your first visit just ring me on 0118 988 2736.

We hold a Spring Show at Swallowfield and often an Autumn one too. These are small shows for you and me, the locals, and are good practice for the big Show in August.

We are always looking for new volunteers for one of the hundreds of jobs that create the Swallowfield Show. We are confident we can find a job that suits you and will be enjoyable.

To get on our mailing list to be kept up to date please email [secretary@swallowfieldshow.co.uk](mailto:secretary@swallowfieldshow.co.uk)

We look forward to seeing you at some of our events.

**Roberta Stewart**



**Contact:** Graham Stanley **e:** [chairman@swallowfieldshow.co.uk](mailto:chairman@swallowfieldshow.co.uk)  
**w:** [www.swallowfieldshow.co.uk](http://www.swallowfieldshow.co.uk)  
**Become a member:** [secretary@swallowfieldshow.co.uk](mailto:secretary@swallowfieldshow.co.uk)





## SWALLOWFIELD FETE

Saturday, 8th June 2pm to 5pm

Many enjoyed the annual June Fete and THANK YOU to everyone who assisted in so many ways. The weather was kind, the stalls were inviting and the teas as popular as ever.

We were delighted to welcome back the Yateley Morris Men. The coconut shy and, especially, rides by the small traction engine which were new attractions and which drew considerable interest. Micka's Games attracted not only the children but adults for the Tug of War finale. Do try out his classes on the Rec' most days [www.mickastraining.co.uk](http://www.mickastraining.co.uk)

## SWALLOWFIELD BADMINTON CLUB

Social badminton is a great way to keep fit through low impact exercise and a great way to make new friends.

We are a friendly group and attract members from the villages of Swallowfield, Riseley, Farley Hill, Spencers Wood and Shinfield.

We are also a non-league club (so no pressure), and our playing standards are quite varied. Whatever level you are or aspire to be, you will find us a friendly and accommodating group. Our season runs from September to the end of July, so why not come along to a free 'taster' evening! We hope to see you soon.

We are three separate groups who meet at the Swallowfield Parish Hall. These are as follows:



**MONDAY EVENINGS**  
from 8pm to 10pm

**Contact:** Daphne **t:** 07745 180108  
**e:** [daphne\\_seamark@hotmail.com](mailto:daphne_seamark@hotmail.com)

**THURSDAY EVENINGS**  
from 8pm to 10pm

**Contact:** Malcolm **t:** 0118 988 2736

**SOCIAL BADMINTON - THURSDAY AFTERNOON**  
from 2pm to 4pm (except August)

**Contact:** Val Payne **t:** 0118 988 3594  
**e:** [valg.payne@btinternet.com](mailto:valg.payne@btinternet.com)

## RISELEY TENNIS CLUB

Hi from Riseley tennis club, lots happening:

- Summer camps running through August, spots still available, you can book in on the website
- Exciting news: Our new led floodlights will be up soon
- Courts 1 and 4 have been painted. All 4 courts are now looking very smart
- We are running our first Friday tournaments through the summer
  - Refer to the website for booking. You can also see what food will be being served



**Contact:**

**w:** [clubspark.lta.org.uk/RiseleyTennisClub](http://clubspark.lta.org.uk/RiseleyTennisClub) **f:** [www.facebook.com/groups/riseleytennis](http://www.facebook.com/groups/riseleytennis)



- Please keep a lookout on our website for future events coming up
- Annual club tournament is on Sunday 22nd September from 1pm
  - Please come and support the players and have a drink in the bar
- Interested in trying tennis? Come along to our "Social Tennis", every Thursday at 6pm

As always - looking forward to seeing you on court

Sandy Wyles



## SWALLOWFIELD VELO CLUB

Our rides normally depart from School Green, Shinfield every Sunday.

Summer rides are typically 50 to 70 miles, with a coffee stop in the middle.

We run in 3 social groups based on your preferred speed and distance.

More information and more Ride details can be found on "Ride With GPS" which is published weekly on our Facebook page.

If you fancy joining us for a ride or would like to find out more about club cycling, please contact me.

Paul Schulz



**Contact:** Paul Schulz

**e:** [paul.schulz@mail.com](mailto:paul.schulz@mail.com) **w:** [www.swallowfieldvelo.club](http://www.swallowfieldvelo.club)

**f:** [www.facebook.com/groups/svcmembers](http://www.facebook.com/groups/svcmembers)





## SWALLOWFIELD SEATED EXERCISE CLASS

EVERY THURSDAY



### MUSICAL MOVEMENT

- All abilities, Dementia and Wheelchair friendly
- 11am – 12:15pm with tea, biscuits and time for a chat
- Just turn up!
- Alternatively call Coral on 07765 681797

A voluntary donation of £3 would be nice but not essential as this is subsidised.

(The Riseley, Swallowfield & Farley Hill Charitable Trust and Swallowfield Parish Council).

## SWALLOWFIELD WALKING GROUP

EVERY OTHER WEDNESDAY

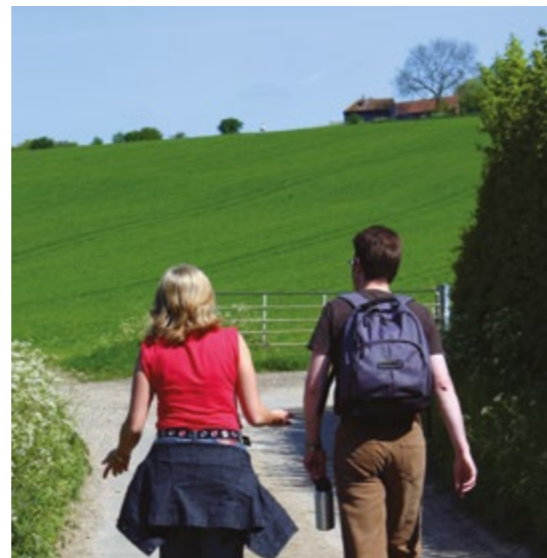
Meeting at 10.30am

So simple, very powerful and scientifically proven to transform your health, body and mind.

Mixed groups of locals, very welcoming!

- New group, come and join us!
- A typical walk will be around 3 miles
- Optional tea / coffee at the parish hall afterwards.
- Meeting Point: Normally Swallowfield Parish Hall

If you would like to join us, we will add you to the WhatsApp group – text Sarah Firth 07973307721



### FUTURE DATES

11th & 25th September  
9th & 23rd October  
6th & 20th November



## RUSSELL PLAYERS

The Russell Players held their 2024 Annual General Meeting in July. Held in the evening it was well attended and we had a productive and enjoyable night, which was rounded off perfectly with drinks and elaborate “light bites” created by our very own Bryan Partington.

Following on from the success of our May play our attention turns to our October production.

We are delighted that Deni Smale (supported by Chris Partridge) has agreed to Direct. She has chosen, “The Invitation” by Juliet Devon. The play has been cast, the sets are being planned, the costumes and props sourced and the rehearsals are well underway.

## THE INVITATION

by Juliet Devon

Here’s a synopsis to whet your appetite.

This light-hearted play is a familiar bride-to-be situation, with the bride-to-be (Eve), struggling to get the wedding she wants despite having an over-enthusiastic and over-helpful mother. Eve is working hard on her wedding day plans which seem to involve doing everything her mother wants regardless of how she feels about it. Eventually, Eve’s creativity takes over, and the plans change in rather innovative and surprising ways.

### THE PERFORMANCE DATES ARE:

Saturday 19th October  
Sunday 20th October  
Wednesday 23rd October



**Contact:** Juliet Devon if you would like to join the Russell Players  
**e:** russellplayers@gmail.com **w:** www.russellplayers.co.uk



Further details including ticket prices and ticket release dates will follow shortly on our Facebook page, local community Facebook pages, our website, and the local Parish website.

We look forward to seeing you and your friends at what promises to be another entertaining and enjoyable evening hosted by the Russell Players. This production will be brought to you by arrangement with Lazy Bee Scripts.

We are always looking for new members. If you are interested in joining the Russell Players either on stage, backstage, Front of House, helping with costumes or make-up, or would just like to see what we are about, please contact us at [russellplayers@gmail.com](mailto:russellplayers@gmail.com)

We would love to hear from you, and you can be assured of a warm and friendly welcome.

The Committee





## SWALLOWFIELD PITT BRIDGE LODGE

Since our last meeting in May two of our Brethren have been called to higher service. Both were well-known local men and Founder members of our Lodge. George Winter aged 98 years, and David Herring, aged 77 years – May they Rest in Peace and Rise in Glory.

George will be familiar to many as he always attended Remembrance Day wearing his Naval cap and more medals than a Russian General. He saw action in World War II with the arctic convoys (escorting supply ships to Russia), for which the Russians presented him a medal and at D-Day on a mine sweeper, clearing mines before the landings, for which the French awarded him the Légion d'honneur, hence his chest full of medals. He was a Mason of over 50 years standing and gave sterling service to the Fraternity.

Dave ran Kensham Scaffolding in Grazeley and for many years, when Terry (Almo) Williams ran the Crown pub, went on sea fishing trips, with many regulars piling into Terry's Transit Van, going as far afield as Scotland. Dave was also a well-respected Mason, renowned for his good humour and optimistic nature.

At our next meeting in September, we will pay due respect and homage to our departed Brethren, they will never be forgotten. But life must go on, so we will then proceed with Lodge business as usual, we will be Initiating a well-known local man and welcoming a new joining member. I am sure that both George and Dave will be looking down on us, delighted that the Lodge continues to grow and prosper, enriching the lives of all who comes into contact with it.

The Lodge meets four times a year in the Marquee at the Mill House Hotel, Basingstoke Road, Swallowfield. Meetings are on the first Monday in February (Installation), September and November, and the second Monday in May. If you are interested in being initiated into the Fraternity, or you are a local Mason who would like to join us, please get in touch for further information. We offer a fascinating experience in our excellent local venue with warm fellowship and good food.

**Tim Double, Secretary**

**Contact:** Tim Double, Secretary  
**e:** timpac5261@live.co.uk **t:** 07703 254 350  
**w:** berkspgl.org.uk/craft-lodges/19970



## COFFEE CORNER

We've been very busy over the spring and summer, serving coffee, tea and cakes to an increasing number of visitors, including local walking and cycling groups.

Run by volunteers, all our profits are donated to local charities. Recently we've given £250 each to Alana House Women's Community Project in Reading, and Camp Mohawk, a multi-functional day centre for children with special needs and their families, near Wargrave.

Our special link with the Reading Community Learning Centre continues, with students joining us in May for a coffee morning where they were able to practice their English.

**Diary Date: 25th September, Macmillan Coffee Morning**

Join us in the Parish Hall. Having raised over £1,000 last year, it would be great to match or beat it!

We would love to see you then, or any Wednesday morning in the Davies room.

And if you like baking and have a bit of free time, why not join the team? Please contact [clare.pilgrim@btinternet.com](mailto:clare.pilgrim@btinternet.com).

The Coffee Corner Team

# Your Local Borough Councillor Update

## Trowes Lane Tragedy

(This is the personal view from only one of our Ward Councillors)

It is all desperately disappointing. When we dispersed on the Wednesday morning, as the Planning Inquiry closed, I thought we'd done enough to show the considerable difficulties that the Croudace application posed for Swallowfield, and that we had been listened to sympathetically by the Inspector. It comes as a surprise that the Decision was based on issues outside our control.

We had demonstrated that there was a shortfall in the Parish of school places and medical services. In the Decision, there is simply an assumption that they will be provided. More serious is the position of Thames Water, company that is essentially bankrupt, which is instructed to make various improvements before building will start. Will they? I suspect not, which could mean that the Croudace development never gets built.

Other landowners and developers may try their luck in Swallowfield and having used our best arguments and lost, they may be more difficult to resist.

But the Trowes Lane site had been included in the draft local plan of 2021, which meant that there was a presumption in favour its development. That's not the case with other land in the parish, but it might be a good idea for Swallowfield to think about ways in which it can help itself.

First, what about a primary school? Swallowfield children get placed wherever there are vacancies. They will be squeezed out of Grazeley as the Kingfisher Grove development comes on stream. They will be squeezed out of The Coombes as building continues in Arborfield. If Swallowfield wants a school, then it needs to start lobbying for one.

And then there is the question of a Neighbourhood Plan, which was discussed in this newsletter a year ago. This would give the Parish some means of determining its destiny. If nothing else, to have a Neighbourhood Plan entitles the Parish Council to a bigger share of the Community Infrastructure Levy (CIL), which can be used to make the unpalatable a little more acceptable.

Perhaps we thought Swallowfield lay beyond the developers' horizons. That might not be true anymore. The magnificent effort to resist Croudace may have failed, but let's try to get something positive out of a truly disheartening experience.

CLlr Catherine Glover  
Wokingham Borough Council  
Spencers Wood & Swallowfield Ward

Wokingham Borough  
Councillors: Spencers Wood  
and Swallowfield Ward

**Dave Edmonds**  
dave.edmonds@wokingham.gov.uk

**Catherine Glover**  
catherine.glover@wokingham.gov.uk

**Stuart Munro**  
stuart.munro@wokingham.gov.uk

# Local Services and Support

## SWALLOWFIELD MEDICAL PRACTICE

### ACUTE ILLNESS APPOINTMENTS

We are now well into our busiest period with lots of coughs and colds being seen.

Please do remember to use the NHS website for more common ailments prior to calling as some of these can be treated at home or via the local pharmacy, which in turn eases the pressure on our acute illness team.

The following links provide advice for coughs and colds.

#### COUGHS

<https://www.nhs.uk/conditions/cough/>

#### COLDS

<https://www.nhs.uk/conditions/common-cold/>

#### COVID-19 AND FLU VACCINE

Those who are eligible will be invited to receive a vaccine when the Autumn seasonal vaccines are available.

We are waiting for confirmation of the eligibility criteria. Once this is confirmed we will inform eligible patients.



**w:** [swallowfieldmedicalpractice.co.uk](http://swallowfieldmedicalpractice.co.uk)



## THE CALICO TRUST

We are a local charity which helps people in need. If you or someone you know needs financial assistance please let us know.

**Contact:** Celia Adams  
**t:** 07946 654424 / 01189884661  
**e:** [celia8844@gmail.com](mailto:celia8844@gmail.com)

**Contact:** Ros Riddell  
**t:** 07885 045362 / 0118 988 2014  
**e:** [ros.riddell@btinternet.com](mailto:ros.riddell@btinternet.com)





## RISELEY, SWALLOWFIELD, FARLEY HILL CHARITABLE TRUST

Riseley, Swallowfield & Farley Hill Charitable Trust are hugely grateful to the community for your continued support for our fundraising Jumble Sales, thank you.

We are looking for volunteers for our upcoming jumble sale in October. Helpers are needed for setup, selling items during the jumble sale, and clean-up afterward.

We are fundraising to support our community, if you are a local family, individual, or organization in need of assistance, please reach out to us at [rsfenquiries@gmail.com](mailto:rsfenquiries@gmail.com).

Thank you to everyone involved for your continued support and see you soon.



**Social:** [www.facebook.com/RSFCharitableTrust/](https://www.facebook.com/RSFCharitableTrust/)

### RESERVE THE DATE

**Saturday 12th October**

Will be our next charity Jumble Sale and will be held in Swallowfield Parish Hall RG7 1QX.

Please make a note and get ready for a post-summer clear out.

Look out for details on how to donate items on our Facebook page and other local Facebook pages.

Thank you



## ALL SAINTS CHURCH SWALLOWFIELD

I have been at All Saints quite often in the first weeks of August (the time of writing) and the variety of activity there has been heart warming. A rehearsal for one of the two weddings the following weekend; a Mothers' Union group tour of the church; two 'twitchers' watching birdlife; some visitors taking the opportunity of the church being open; a family enjoying the stillness – though the next time, the churchyard was far from tranquil as it got its mid-summer cut. Together with the many walkers who pass through, it is good to see people appreciating our community church – for it is YOU it is there for; and we pray that the Spirit of the place will uplift and support you and bring you closer to your God.

The Farley Singers' July concert was as memorable as ever, featuring music to mark the centenary of Charles Villiers Stanford, writer of much choral church music, and raising money mainly for the MND Association, in memory of faithful All Saints member, Mike Reece.

**Barbara Stanley, Church Warden**

**Contact:** Barbara Stanley **w:** 0118 988 5923

**e:** [office@loddonreach.org.uk](mailto:office@loddonreach.org.uk) **w:** [www.loddonreach.org.uk/all-saints](http://www.loddonreach.org.uk/all-saints)

### FOR YOUR DIARY

We look forward to **Remembrance Sunday on 10 November**. Note that our Act of Remembrance and the two minutes silence at the War Memorial starts at **10.15 am**, and will be followed by the Remembrance service in the church at **10.50am**.

This year we shall specially remember our Artic Convoy and D-Day veteran, George Winter, who has sadly died at the age of 98. Every year, he laid a wreath for his companion, who was killed at 19. It is the many young men who lost the chance of a long and fulfilling life that we especially remember on this annual occasion and pledge to play our part in spreading peace, not conflict, throughout our nation and the world.





## RISELEY VILLAGE TEA ROOM

The Tea room continues to serve the community and the wider community, we are now open as follows:

**10:00 to 12:00 and 2pm to 5pm  
Thursday, Friday, Saturday and Sunday.**

Saturday mornings at the Tennis club are now becoming a little Saturday treat for several members of the non-tennis playing community. It's great to be able to offer a weekend place to go (not all lunch and coffee clubs are open at the weekend) and that too can be a lonely time so our Bacon and egg rolls fill the tummy as well as the time!

We have had a few new staff members join us – I'll introduce you to them on paper as I don't have a photo of everyone together as yet (maybe for the next issue).

I would also like to add that they are incredible, every single one of them – honestly.

- Sally who has been with us since February along with her son Sam

**Contact:** Debbie  
**e:** theriseleyvillagetearoom@gmail.com **t:** 0118 996 7375  
**w:** www.riseleyvillagetearoom.co.uk  
**f:** www.facebook.com/RiseleyVillageTeaRoom

- Sue works Thursdays and Friday mornings

- June Saturday and Sundays

- Plus, the younger ones, Grace, Bella, Molly and Mia

- Jane, Suzanne and Jess are on permanent stand-by

I don't think I've left anybody out, together they make your experience memorable.

We have updated the website to publish notices and events etc. Please take a look. We also post on social media sites such as Facebook.

### Suggestion

Why not enhance your celebration – Lawrie Wright has played the piano several times at the Tea room to great acclaim, ask for more information.

I would like to thank everyone for your continued support and kindness and look forward to seeing you over the festive period.

Best wishes

**Debbie and the incredible Team**



### UPCOMING EVENTS

#### TBC (Oct / Nov)

Simon and Hillary – An evening of interesting instruments music and songs.

#### 14th November

Our Christmas menu will be available, start planning your visit now

#### 15th December

The Tonix – A festive afternoon tea, book now for £35pp.  
- Receive a small Christmas gift if you wear a Christmas jumper/accessory.

### ANNUAL CLOSURE

We will close on the 20th December and re-open on 16th January 2025.



### LOCAL CONTACTS

**All Saints' Church, Swallowfield and Nutbean Cemetery**  
0118 988 5923 or email office@loddonreach.org.uk

**Citizens Advice (Wokingham) 0808 278 7958**

**Emergency Services 999**

**Farley Hill Primary School 0118 973 2148**

**Gas (Emergency) 0800 111 999**

**Keep Mobile 0345 544 0850**

**Lambs Lane School 0118 988 3820**

**Medical (Non-emergency) 111**

**Police (Non-emergency) 101**

**Reading Buses 0118 959 4000**

**Readibus 0118 931 0000**

**Riseley Village Tea Room 0118 99 67375**

**Royal Berkshire Hospital 0118 322 5111**

**SSE Electricity (Emergency) 0800 783 8866**

**Shinfield Voluntary Car Service 0118 9883400**

**Spencers Wood Library 0118 988 4771**

**Swallowfield Community Responders**  
0118 988 4384

**Swallowfield Calico Trust 0118 988 4661**  
or 0118 988 2014

**Swallowfield Parish Stores 0118 988 5138**

**Swallowfield Medical Practice**  
0118 988 3134 (general) or  
0118 988 3473 (appointments)

**Thames Water (Emergency) 0800 714 614**

**Wokingham Borough Council 0118 974 6000**

**Wokingham Hospital 0118 949 5000**

**24hr Floodline Service 0845 988 1188**

### DID YOU KNOW?

Our redesigned newsletter will result in a saving of up to 32,000 sheets of paper annually.

# Facilities for hire

The Main Hall, Davies Room and Rose Room at Swallowfield Parish Hall are available for weddings, parties, clubs/groups, meetings and other events. Please call 0118 9885 444 or email [finance\\_officer@swallowfieldpc.gov.uk](mailto:finance_officer@swallowfieldpc.gov.uk)

For information on hiring Victory Hall in Farley Hill, please call 0118 324 6600 or email [hire@victoryhalltrust.com](mailto:hire@victoryhalltrust.com)

### CONTACTING THE PARISH COUNCIL

Councillors can be contacted through Liz Halson, the Parish Clerk.

0118 988 5929  
[clerk@swallowfieldpc.gov.uk](mailto:clerk@swallowfieldpc.gov.uk)  
[www.swallowfieldpc.gov.uk](http://www.swallowfieldpc.gov.uk)

Your Parish Councillors are:

John Anderson (Chair)  
[john.anderson@swallowfieldpc.gov.uk](mailto:john.anderson@swallowfieldpc.gov.uk)

Victoria Adams  
[victoria.adams@swallowfieldpc.gov.uk](mailto:victoria.adams@swallowfieldpc.gov.uk)

Mark Binns  
[mark.binns@swallowfieldpc.gov.uk](mailto:mark.binns@swallowfieldpc.gov.uk)

Catherine Drew  
[catherine.drew@swallowfieldpc.gov.uk](mailto:catherine.drew@swallowfieldpc.gov.uk)

Laura Edmonds  
[laura.edmonds@swallowfieldpc.gov.uk](mailto:laura.edmonds@swallowfieldpc.gov.uk)

John McDermott  
[john.mcdermott@swallowfieldpc.gov.uk](mailto:john.mcdermott@swallowfieldpc.gov.uk)

Margaret McDonald  
[margaret.mcdonald@swallowfieldpc.gov.uk](mailto:margaret.mcdonald@swallowfieldpc.gov.uk)

Simon Taylor (Chair, Planning)  
[simon.taylor@swallowfieldpc.gov.uk](mailto:simon.taylor@swallowfieldpc.gov.uk)





# AUTUMN CLEAN UP DAY



Meet in the Davies Room, Swallowfield Parish Hall, RG7 1QX

**Saturday 26th October 2024, 10am and 2pm**

Please come along and lend a hand but remember to wear gloves, strong footwear and suitable clothing. Bring along your own litter picker and Hi Vis otherwise they can be provided.

**Refreshments will be provided**

For further details please contact the Clerk on 01189 885929  
or [clerk@swallowfieldpc.gov.uk](mailto:clerk@swallowfieldpc.gov.uk)

## BECOME A PARISH COUNCILLOR

We have a vacancy – Will YOU join us?

Would you like to become an influencer in the life of your village, your parish, your local environment, recreational facilities, local transport, planning and housing issues and so much more. For better or worse it's where you can get involved to help and make a difference to our community.

The Parish Council is made up of nine members of the public.

For more details please contact the Parish Clerk  
on 0118 988 5929 / [clerk@swallowfieldpc.gov.uk](mailto:clerk@swallowfieldpc.gov.uk)

Speak to or email any of our councillors – contact details on page 19.

**STOP  
PRESS!**

